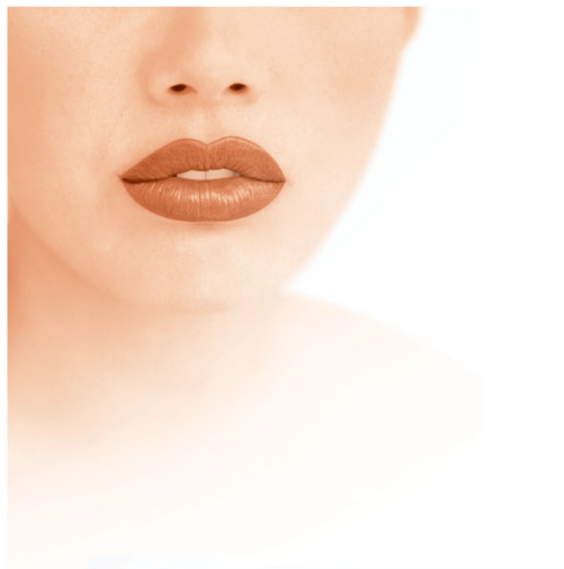
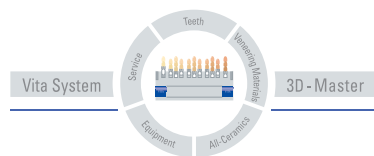


VENEERING MATERIAL
VITAVM[®]13

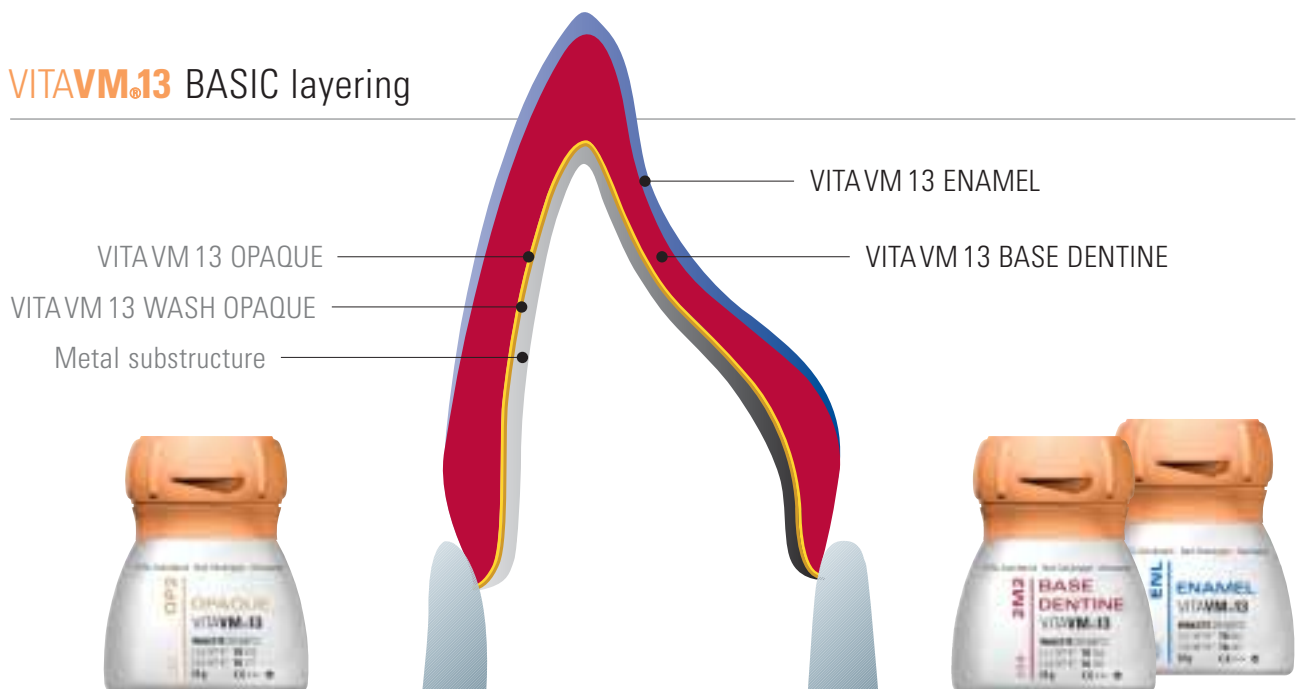


Date of issue: 10-07



VITA

VITAVM¹³ BASIC layering



The VITAVM 13 BASIC layering consists of the application of the two porcelains VITAVM 13 BASE DENTINE and VITAVM 13 ENAMEL.

The color-carrying VITAVM 13 BASE DENTINE porcelains with excellent coverage represent the perfect precondition for the preparation of veneers with intensive shades. With this two-layer alternative, VITA offers an ideal solution particularly for the reproduction of optimum shade results in the case of thin walls. Additionally, the intensive shade effect of the BASE DENTINES allows the ENAMEL porcelains to easily achieve the desired translucency. The user is able to create a natural restoration with a lifelike appearance using only two layers.

By means of the different conditions in the wall thickness of BASE DENTINE and ENAMEL the intensity of the restoration can be influenced. The thicker the BASE DENTINE layer, the more intensive the shade result. The thicker the ENAMEL layer, the less intensive the shade result.

VITAVM¹³ BASIC KIT ^{*/**}

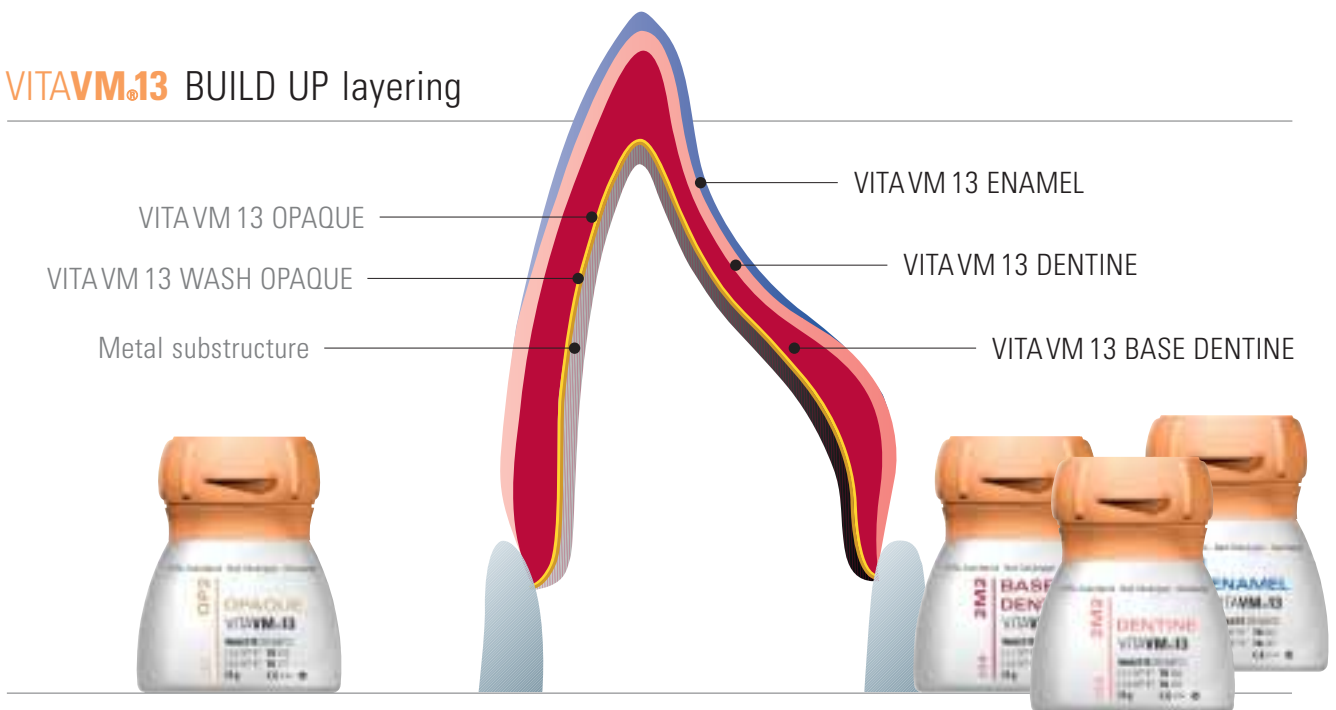
Anzahl	Inhalt	Material
1	12g	WASH OPAQUE WO
5	12g	OPAQUE ^Δ OP1 - OP5
5	12g	CHROMA PLUS CP1 - CP5
26	12g	BASE DENTINE ^Δ 1M1-5M3
2	12g	ENAMEL ^Δ ENL, END
1	12g	NEUTRAL ^Δ NT
1	12g	WINDOW ^Δ WIN
3	12g	CORRECTIVE COR1 - COR3
1	50 ml	VITAVM MODELLING LIQUID
1	50 ml	VITAVM OPAQUE FLUID
1		Shade indicator
1		VITA Toothguide 3D-MASTER
1		Working instructions

* Available as VITAVM 13 BASIC KIT with reduced assortment of porcelains.

** Also available as VITAVM 13 BASIC KIT/ BASIC KIT SMALL with OPAQUE PASTE.

^Δ The following shades are also available in 50g: BD 1M1-3R2.5, BD 4M1-4M3, NT, ENL, END, WIN, OP1, OP2, OP3, OP4, WO, D 1M1-3R2.5, D 4M1-4M3

VITAVM.13 BUILD UP layering



The VITAVM 13 BUILD UP layering consists of the application of the three materials BASE DENTINE, DENTINE and ENAMEL after applying the WASH OPAQUE and OPAQUE materials.

In conjunction with the shade-carrying BASE DENTINE and the translucent DENTINE, the BUILD UP layering enables an increased impression of depth to be created in the restoration. The use of the three-layer method permits a reduced and more individual application of the ENAMEL porcelains. This results in an even closer resemblance to what nature intended.

The shade intensity can be individually adjusted by the combination of ENAMEL and DENTINE porcelains in relation to the layer thickness of BASE DENTINE. An increased proportion of BASE DENTINE results in a more intensive shade, whereas a greater amount of DENTINE and ENAMEL reduces the chroma of the color.

Note:

The shade effect of the restoration is mainly determined by the BASE DENTINE. The DENTINE porcelains, as in natural teeth, are purely for creating a harmonious transition to the enamel.

For the **BUILD UP layering**, in addition to the VITAVM.13 BASIC KIT (s. p. 12) you require the VITAVM.13 BUILD UP KIT*

Quantity	Content	Material
26	12g	DENTINE** 1M1-5M3
1	50ml	VITAVM MODELLING LIQUID

* Also available as VITAVM 13 BUILD UP KIT SMALL with a reduced selection of porcelains.

** Also available in 50g in the following shades: D 1M1-3R2.5, 4M1-4M3

VITAVM.13 PROFESSIONAL KIT *

Quantity	Content	Material
11	12g	EFFECT CHROMA EC1-EC11
11	12g	EFFECT ENAMEL EE1-EE11
6	12g	EFFECT LINER EL1-EL6
3	12g	MAMELON MM1-MM3
3	12g	EFFECT PEARL EP1-EP3
3	12g	EFFECT OPAL EO1-EO3
3		VITAVM Shade sample blades

* also available as VITAVM 13 PROFESSIONAL KIT SMALL (EC1, EC4, EC6, EC8, EC9, MM2, EP1, EO2, EE1, EE3, EE7, EE8, EE9, EE10, EE11)

Special porcelains for the dental technician aiming for customer satisfaction by providing individually layered restorations that reflect the spectrum of the natural tooth.

VITAVM.13 BLEACHED COLOR KIT *

Quantity	Content	Material
1	12g	OPAQUE OPO
3	12g	BASE DENTINE OM1-OM3
3	12g	DENTINE OM1-OM3
1	12g	ENAMEL ENL
1	12g	NEUTRAL NT
1	12g	WINDOW WIN
1	50ml	OPAQUE FLUID
1	50ml	MODELLING LIQUID
1		BLEACHED SHADE GUIDE SHADE GROUP OM
1		working instructions

* also available as OPAQUE PASTE

For creating brilliant white teeth for the perfect white smile.

VITAVM.13 GINGIVA KIT *

Quantity	Content	Material
2	12g	GINGIVA OPAQUE GOL, GOD
5	12g	GINGIVA G1-G5
1		VITAVM Shade sample blade

* also available as OPAQUE PASTE

For natural gingival areas and harmonious shade reproduction.

VITAVM.13 MARGIN KIT

Quantity	Content	Material
6	12g	MARGIN M1, M4, M5, M7-M9
1		VITAVM Shade sample blade

For manufacturing a ceramic shoulder as an aesthetic transition between crown and prepared tooth.

VITAVM.13 ENAMEL porcelains

OM1	OM2	OM3	1M1	1M2	2L1.5	2L2.5	2M1	2M2	2M3	2R1.5	2R2.5	3L1.5	3L2.5
ENL	ENL	ENL	ENL	ENL	ENL	ENL	ENL	ENL	ENL	ENL	ENL	ENL	ENL

3M1	3M2	3M3	3R1.5	3R2.5	4L1.5	4L2.5	4M1	4M2	4M3	4R1.5	4R2.5	5M1	5M2	5M3
ENL	ENL	ENL	ENL	ENL	END	END	END	END	END	END	END	END	END	END

VITAVM.13 OPAQUE porcelains

OM1	OM2	OM3	1M1	1M2	2L1.5	2L2.5	2M1	2M2	2M3	2R1.5	2R2.5	3L1.5	3L2.5
OP0	OP0	OP0	OP1	OP1	OP2	OP2	OP2	OP2	OP2	OP2	OP2	OP3	OP3

3M1	3M2	3M3	3R1.5	3R2.5	4L1.5	4L2.5	4M1	4M2	4M3	4R1.5	4R2.5	5M1	5M2	5M3
OP3	OP3	OP3	OP3	OP3	OP4	OP4	OP4	OP4	OP4	OP4	OP4	OP5	OP5	OP5

VITAVM.13 CHROMA PLUS porcelains° (area of application see page 25)

OM1	OM2	OM3	1M1	1M2	2L1.5	2L2.5	2M1	2M2	2M3	2R1.5	2R2.5	3L1.5	3L2.5
-	-	-	CP1	CP1/CP2*	CP2	CP2/CP3*	CP1/CP5*	CP1/CP3*	CP3	CP1/CP3*	CP1/CP4*	CP2/CP5*	CP2/CP5*

3M1	3M2	3M3	3R1.5	3R2.5	4L1.5	4L2.5	4M1	4M2	4M3	4R1.5	4R2.5	5M1	5M2	5M3
CP1/CP5*	CP4/CP5*	CP3/CP4*	CP1/CP5*	CP4/CP5*	CP5	CP4/CP5*	CP5	CP3/CP5*	CP5	CP5	CP4/CP5*	-	-	-

*mixing ratio 1:1

VITAVM.13 EFFECT LINER porcelains° (area of application see page 25)

OM1	OM2	OM3	1M1	1M2	2L1.5	2L2.5	2M1	2M2	2M3	2R1.5	2R2.5	3L1.5	3L2.5
EL1	EL1	EL1/EL2*	EL1/EL2*	EL2	EL1/EL2*	EL1/EL3*	EL1/EL6*	EL1/EL3*	EL2/EL4*	EL1/EL6*	EL2/EL4*	EL2/EL6*	EL4/EL6*

3M1	3M2	3M3	3R1.5	3R2.5	4L1.5	4L2.5	4M1	4M2	4M3	4R1.5	4R2.5	5M1	5M2	5M3
EL1/EL6*	EL2/EL6*	EL4/EL6*	EL2/EL3*	EL5/EL6*	EL6	EL3/EL4*	EL6	EL2/EL3*	EL5/EL6*	EL2/EL3*	EL3/EL4*	EL3/EL6*	EL5/EL6*	EL3/EL4*

*mixing ratio 1:1

VITAVM.13 MARGIN porcelains° (area of application see page 25)

OM1	OM2	OM3	1M1	1M2	2L1.5	2L2.5	2M1	2M2	2M3	2R1.5	2R2.5	3L1.5	3L2.5
M1	M1	M1	M1/M7*	M1/M7*	M1/M7*	M1/M4*	M1/M7*	M1/M4*	M4	M1/M7*	M1/M4*	M4/M7*	M4/M7*

3M1	3M2	3M3	3R1.5	3R2.5	4L1.5	4L2.5	4M1	4M2	4M3	4R1.5	4R2.5	5M1	5M2	5M3
M7	M4/M7*	M4/M9*	M7	M4/M7*	M7	M4/M9*	M7	M7/M9*	M9	M7/M8*	M7/M9*	M7/M8*	M7/M9*	M5/M9*

*mixing ratio 1:1

°The classification tables serve only as a guideline!

VITAVM.13 EFFECT LINER

- To control the fluorescence in the restoration
- To enhance and intensify the basic color
Universally suitable
- Applied in the gingival area, they enhance the distribution of light.

VITAVM.13 CHROMA PLUS

- Color-intensive materials preferably used in combination with the BASE DENTINE
- In the case of thin walls they effectively enhance the shade (see pages 12 and 18)

VITAVM.13 EFFECT CHROMA

- Color-intensive modifier porcelains
- To accentuate certain color areas of the tooth
- To individualize the lightness level (value) in the neck, dentine and enamel areas

VITAVM.13 MAMELON

- Highly fluorescent porcelain which is mainly used in the incisal area
- For color characterization between dentine and enamel

VITAVM.13 MARGIN

- MARGIN porcelains which were specially developed to create an optimum esthetic transition between crown and prepared tooth in the case of labially shortened metal coping in the area of the crown margin. The applied, plastified MARGIN porcelain must be hardened by heat application. It is recommended to stabilize the shoulder using a hairdryer or by means of radiant heat at the furnace opening.

VITAVM. OPAQUE FLUID

- Only for mixing the powder opaques! Must not be used for mixing the dentine porcelains!
- Gives the powder a creamy consistency which provides easy and accurate application and prevents the mixture running off during application.

VITAVM. PASTE FLUID

- Use only for altering the consistency of the paste opaque!

VITAVM.13 EFFECT ENAMEL

- Can be used for all enamel areas of the natural tooth.
- Universally suitable enamel effect materials
- To achieve a natural impression of depth

VITAVM.13 EFFECT PEARL

- Only suitable for effects on the surface, not for layering in
- Perfectly suitable for „bleached“ reproductions
- To obtain nuances of yellow and red

VITAVM.13 EFFECT OPAL

- To obtain the opalescent effect in restorations of young and highly translucent teeth.

VITAVM.13 GINGIVA

- To restore the original gingival situation
- Are applied and fired during the first and second dentine firing
- Color nuances range from orange-red and reddish to brown-red

VITAVM.13 CORRECTIVE

- With reduced firing temperature (800 °C) for corrections after glaze firing
- Corresponds to a translucent enamel material in three nuances

VITAVM.13 COLOR OPAQUE

- Shade-intensive opaque porcelains for characterization in the case of thin walls

VITAVM.13 GINGIVA OPAQUE

- Opaque specially matched to the GINGIVA porcelains

VITAVM.13 MODELLING LIQUID

- Modeling liquid for BASE DENTINE, DENTINE, ENAMEL and additional porcelains
- Also for mixing MARGIN porcelains
- Not suitable for opaque porcelains!

Firing chart for VITAVM.13

	Predr. °C	→ min.	↗ min.	↗ °C/min.	approx. temp. °C	→ min.	VAC min.
Oxidation firing	Please heed alloy manufacturer's instructions !!!						
WASH OPAQUE firing	500	2.00	5.12	75	890	2.00	5.12
WASH OPAQUE PASTE firing	500	4.00	5.12	75	890	2.00	5.12
OPAQUE firing	500	2.00	5.12	75	890	1.00	5.12
OPAQUE PASTE firing	500	4.00	5.12	75	890	1.00	5.12
MARGIN firing*	500	6.00	7.05	55	890	2.00	7.05
EFFECT LINER firing*	500	6.00	7.05	55	890	1.00	7.05
1 st dentine firing	500	6.00	6.55	55	880	1.00	6.55
2 nd dentine firing	500	6.00	6.44	55	870	1.00	6.44
Glaze firing	500	0.00	4.45	80	880	2.00	-
Glaze firing VITA Akzent	500	4.00	4.45	80	880	1.00	-
Correction firing with CORRECTIVE	500	4.00	6.00	50	800	1.00	6.00

*area of indication see page 25

When using dental ceramic, the firing result largely depends on the individual firing procedure of the user, i.e. among other aspects, on the type of furnace, the location of the temperature sensor, the firing tray as well as the size of the workpiece during the firing cycles.

Our recommendations with regard to practical applications for the firing temperatures (regardless of whether they have been provided orally, in writing or in the form of practical instructions) are based on numerous own experiences and tests. The user, however, should consider this information only as a general guideline.

If surface, transparency and degree of gloss should not correspond to the firing result that is achieved under optimal conditions, the firing procedure must be adjusted correspondingly. The crucial factors for the firing procedure are not the firing temperature displayed by the furnace, but the appearance and surface condition of the firing object after the firing process.

In the case of alloys with a CTE (25-600°C) $\geq 14.5 \cdot 10^{-6} \text{ K}^{-1}$ slow cooling should be used from the 1st dentine firing onwards. See the instructions in the VITAVM 13 alloy list under www.vita-zahnfabrik.com.